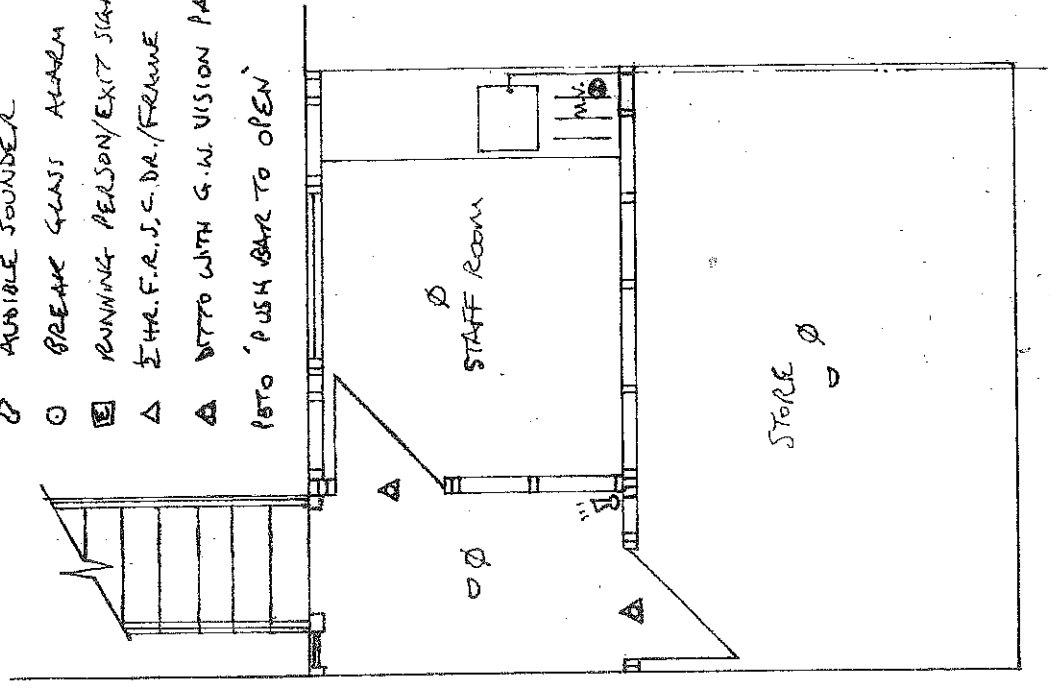


PROPOSED FIRST FLOOR (UNCHANGED) 1:50

- ◊ EMERGENCY LIGHTING
- ◊ AUTOMATIC DETECTION
- ◊ AUDIBLE SOUNDER
- BREAK GLASS ALARM
- ◻ RUNNING PERSON/EXIT SIGN
- △ STR. F.R.S. C. DR./FRAME
- △ BTTO WITH G.W. VISION PANEL
- PSTO 'PUSH BAR TO OPEN'



PROPOSED GROUND FLOOR 1:50